



FOX HUNT
AT
TOP OF
VILLAGE

Meeting of the Hunt
outside Ampney House

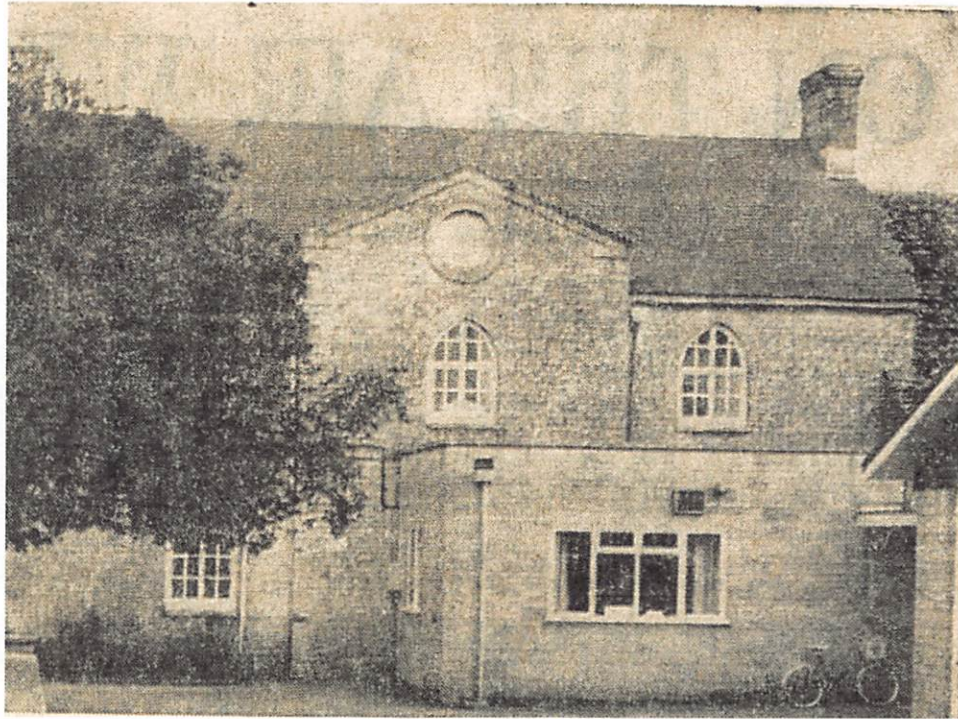


OL CORNER, AMPNEY CRUCIS.

"The Village Shop" opposite
"The Beech Tree"



AMPNEY CRUCIS SCHOOL



An exterior view of Ampney Crucis School, one of the oldest Primary Schools in the county, dating back to 1722



Mr Ernest W FLETCHER with the old Ampney Crucis School admission register, which dates back to the turn of the century.

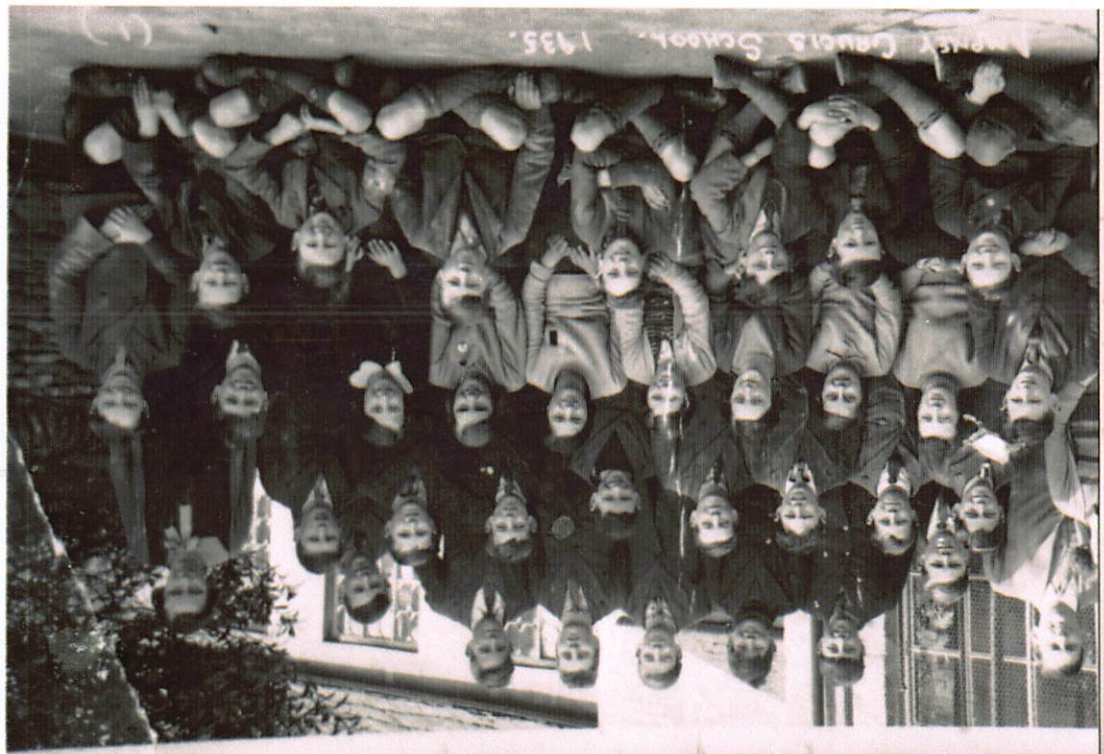


MRS KATE CURTIS OUTSIDE KATE'S COTTAGE

Kate's Cottage

The Village School



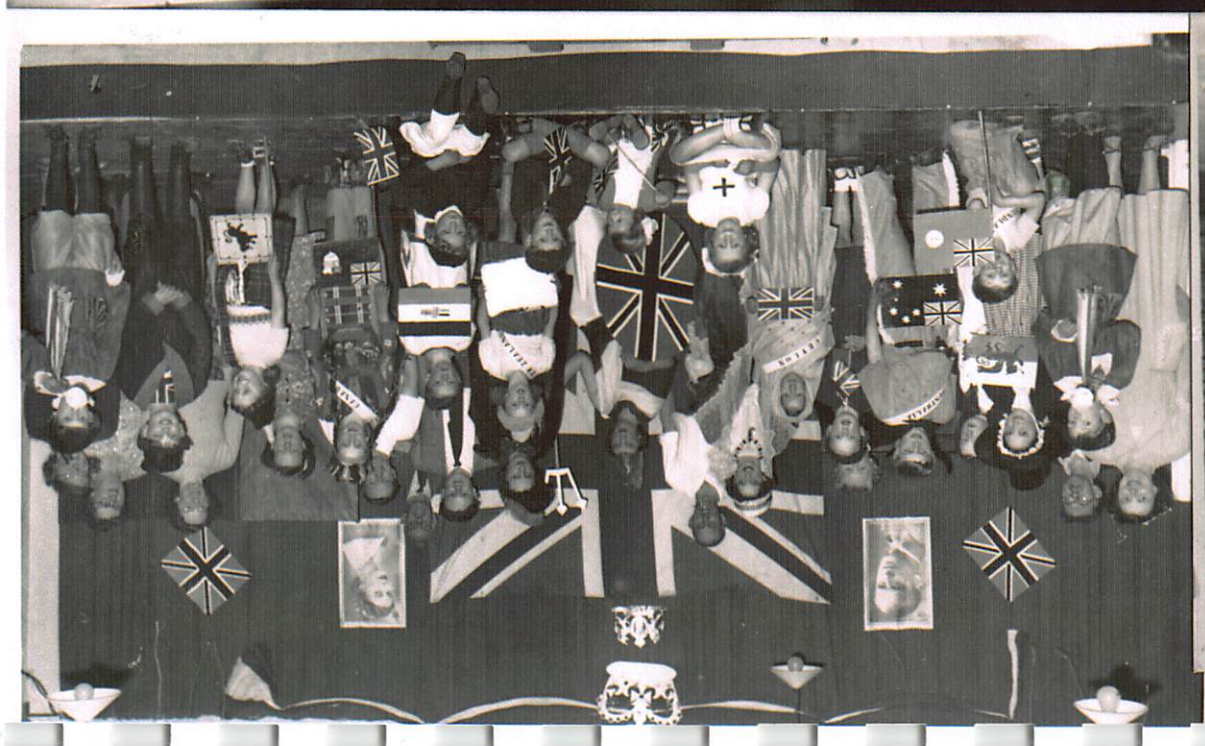


Amney Girls School, 1935. (3)



AMNEY GIRLS SCH. 1935

Scholarship Students Co. 1911, Glenduff



Amney Girls School, 1935. (3)



AMPNEY CRUCIS SCHOOL, 1935.

(3)



AMPNEY CRUCIS SCHOOL, 1935.



The rear of 39 and 40 Ampney
Crucis early 1950's



AMANEY CRUCIS
1920
INFANTS B 36

Top Row

Fred Day - 0 - Charlie Baker - Bubble Aldridge - Fred Aldridge
& Fred Cole

Bottom

0 — Nellie Bartlett - Joyce Hopkins, Mary Purgett
Mabel Lafford

Arthur Ashe
who emigrated
to America from Ampney Crucis
in 1888
- little boy at
right of board.



School Lane - the house where
Frank Barnes, the village
undertaker etc lived



Frank Barnes in his workshop



Ford Farm where Mr Joe Cripps
lived

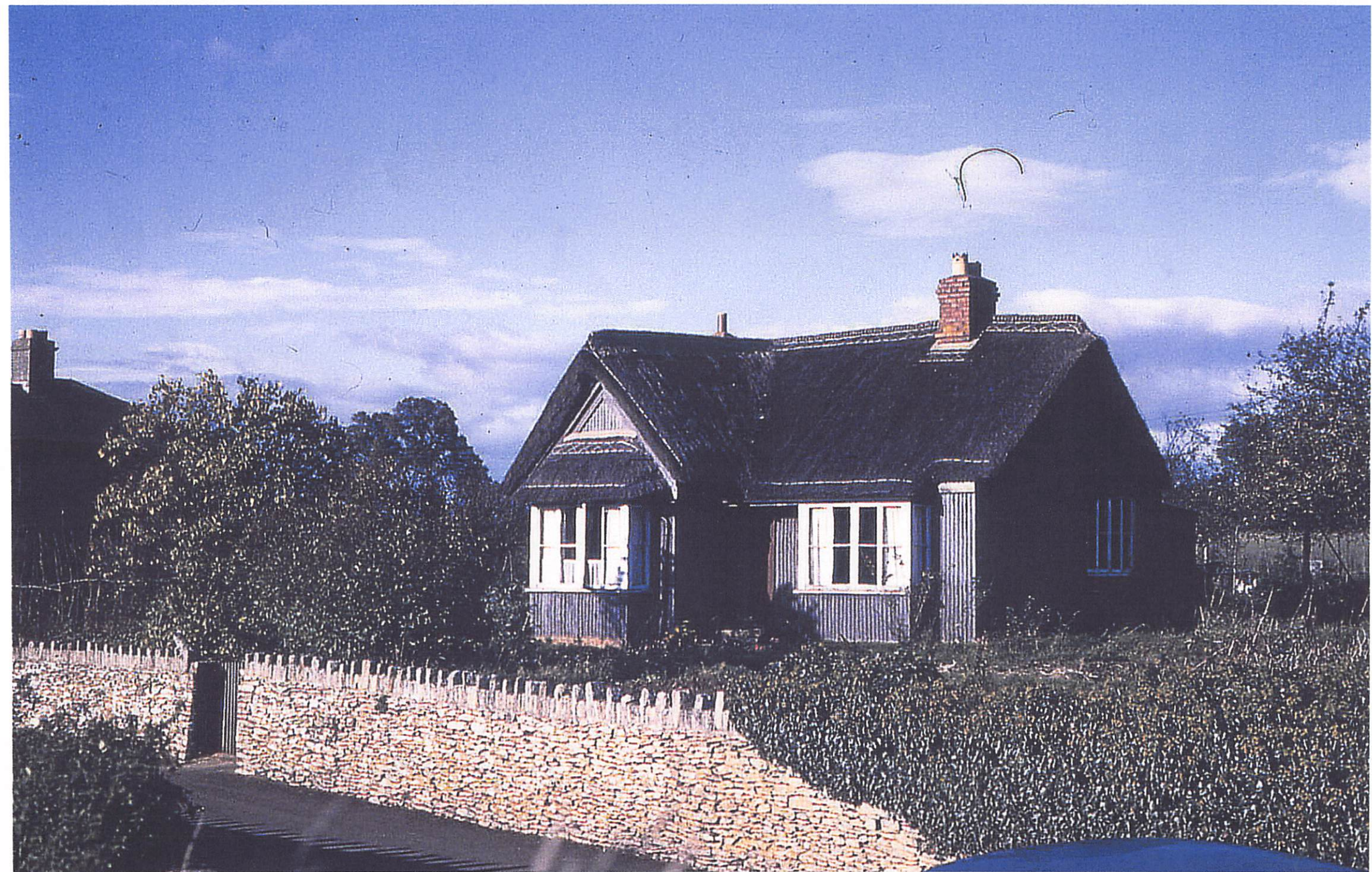


Durncourt Cottages with
just the original 6 houses





Corregated Iron House 1930



The house where Mr Wally
Messenger lived

NOW "LAVENDER"
COTTAGE



Mr & Mrs Billy Cook lived here
Note the well tended vegetable
garden



34 and 35 Ampney Crucis



39, 40 and 41 Ampney Crucis



39 + 40 AMPNEY CRUCIS
NOW "STONE GABLES"



House at bottom of School Lane
on the left - Mr Paul Styles
lives on this site

