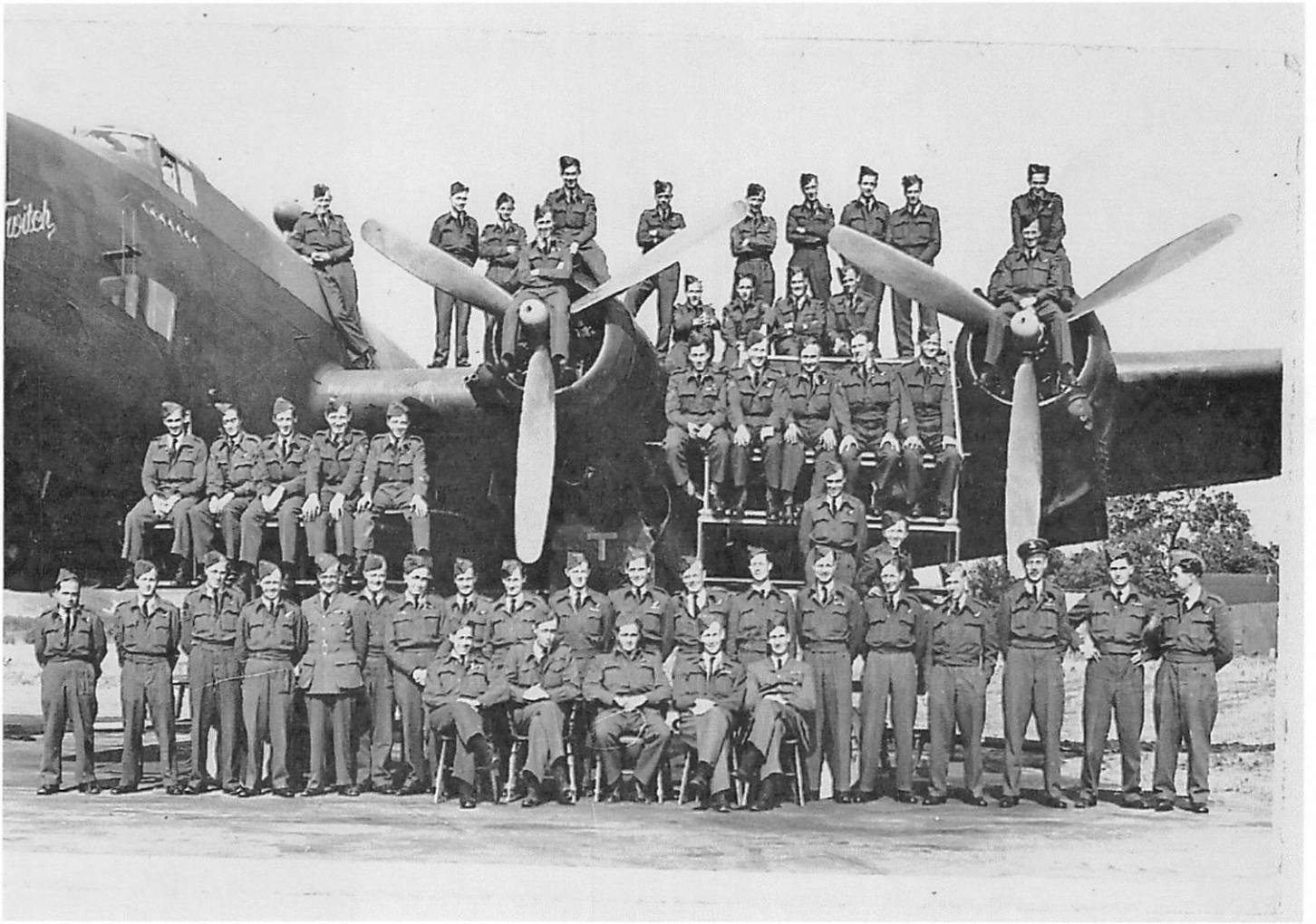


THE CORONATION CONCERT IN THE HALL





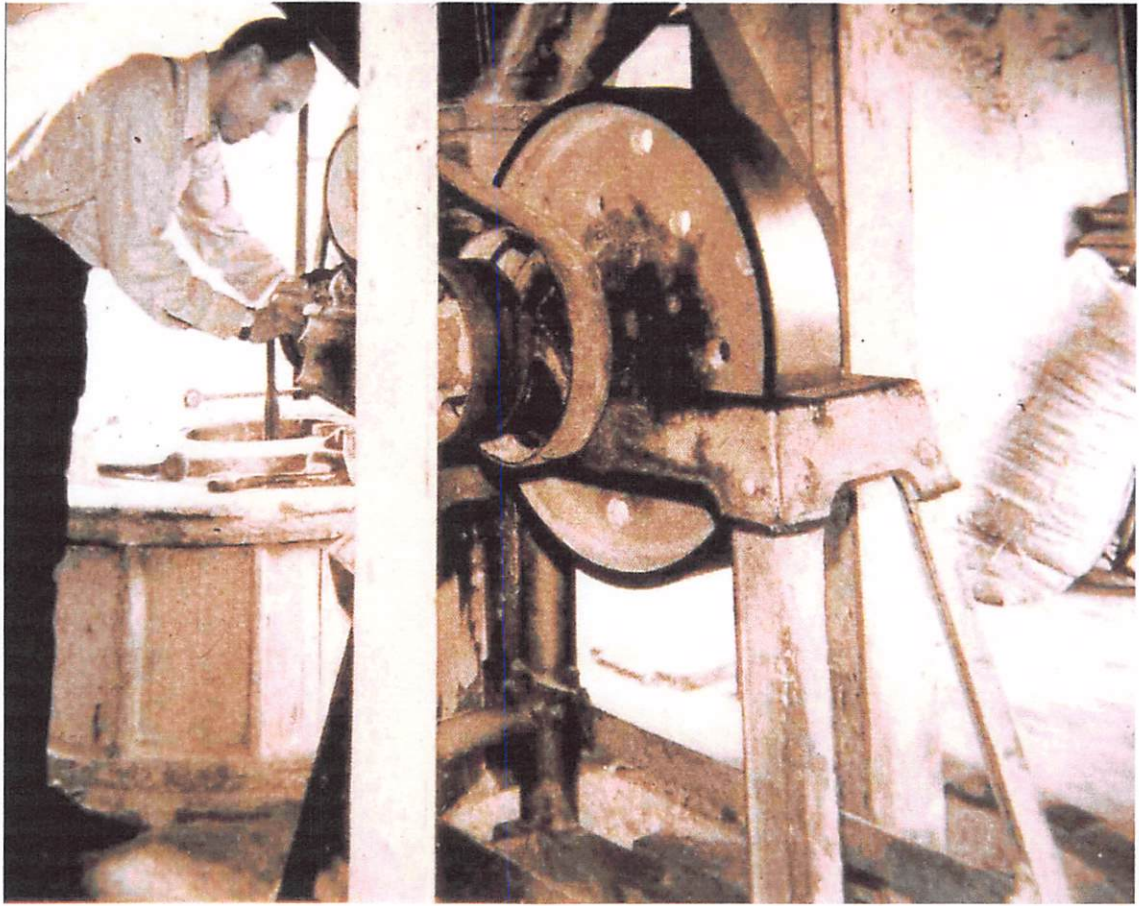




AMPNET CROSS
FROM THE
AIR

Stallworthy's Mill





Bill Stallworthy working at his fathers Mill



Stallworthy Mill



AMPNEY CRUCIS
VILLAGE

HARNHILL
DRIFFIELD

THE Crown of Crucis

AMPNEY CRUCIS
VILLAGE

HARNHILL
DRIFFIELD





THE
CROWN
INN

The Crown, Ampney Crucis

Mr Cole (Karna Everalf's Father)
was landlord

THE Old Post Office and site of
Forge



The old Forge -
Mr Billy Edwards was the
Blacksmith

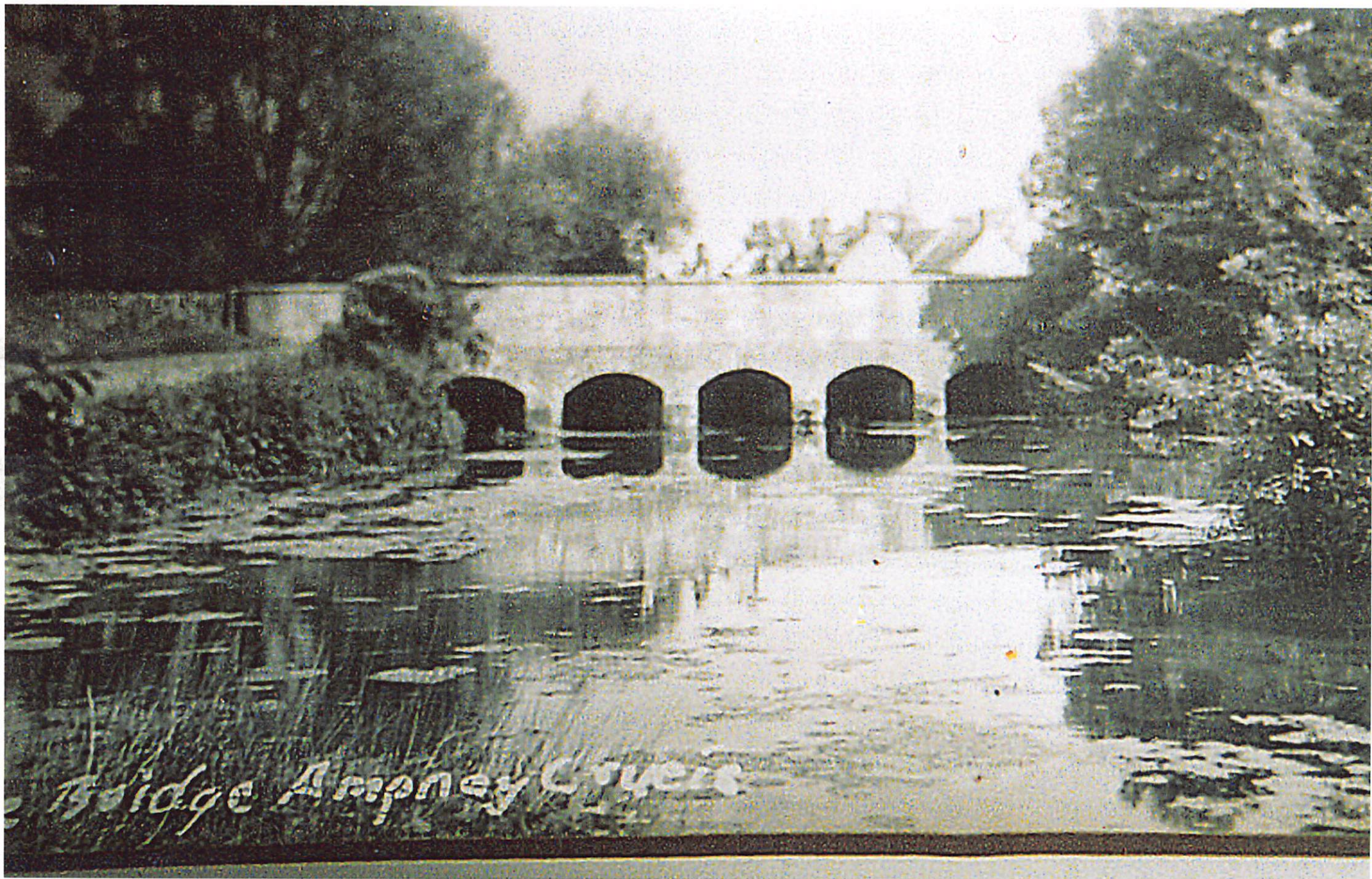


Bill Edwards (Blacksmith)



Door of old Blacksmith's Forge
- some of these are reputed to
of Roman origin and mule shoes





Bridge Ampney Coves



View from the Bridge, Ampney Crucis. 1902

STERRY'S Mill 1902





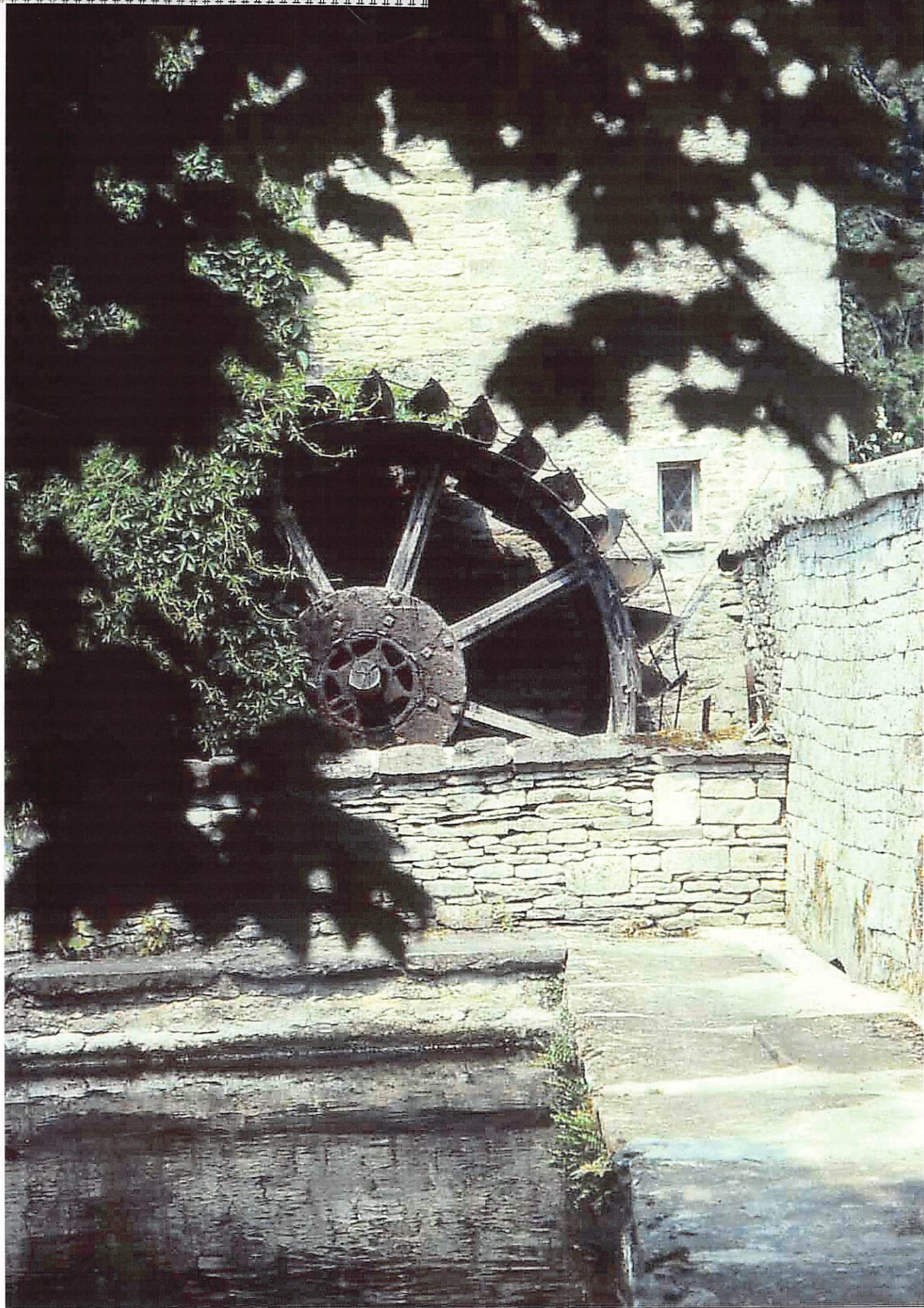


Sterry's Mill

Another picture of Sterry's Mill



THE Old WHEEL, Sterry's Mill





The Old Vicarage

The Mill House where Mr Sterry
lived



Mill House

where Bob Story (miller)

lived