

Mrs Kent outside her home
originally one of three houses
next to the Village Hall



The Malt House when Captain
Champion lived there



The Old Brewery





The Paddocks



The Old House



Walking down the Village street!

(Peggy Thompson with daughter,
Lynne and Paul in the
pushchair talking to Rev and
Mrs Cowen



Evacuees "Digging For Victory"
at the rear of the Village Hall



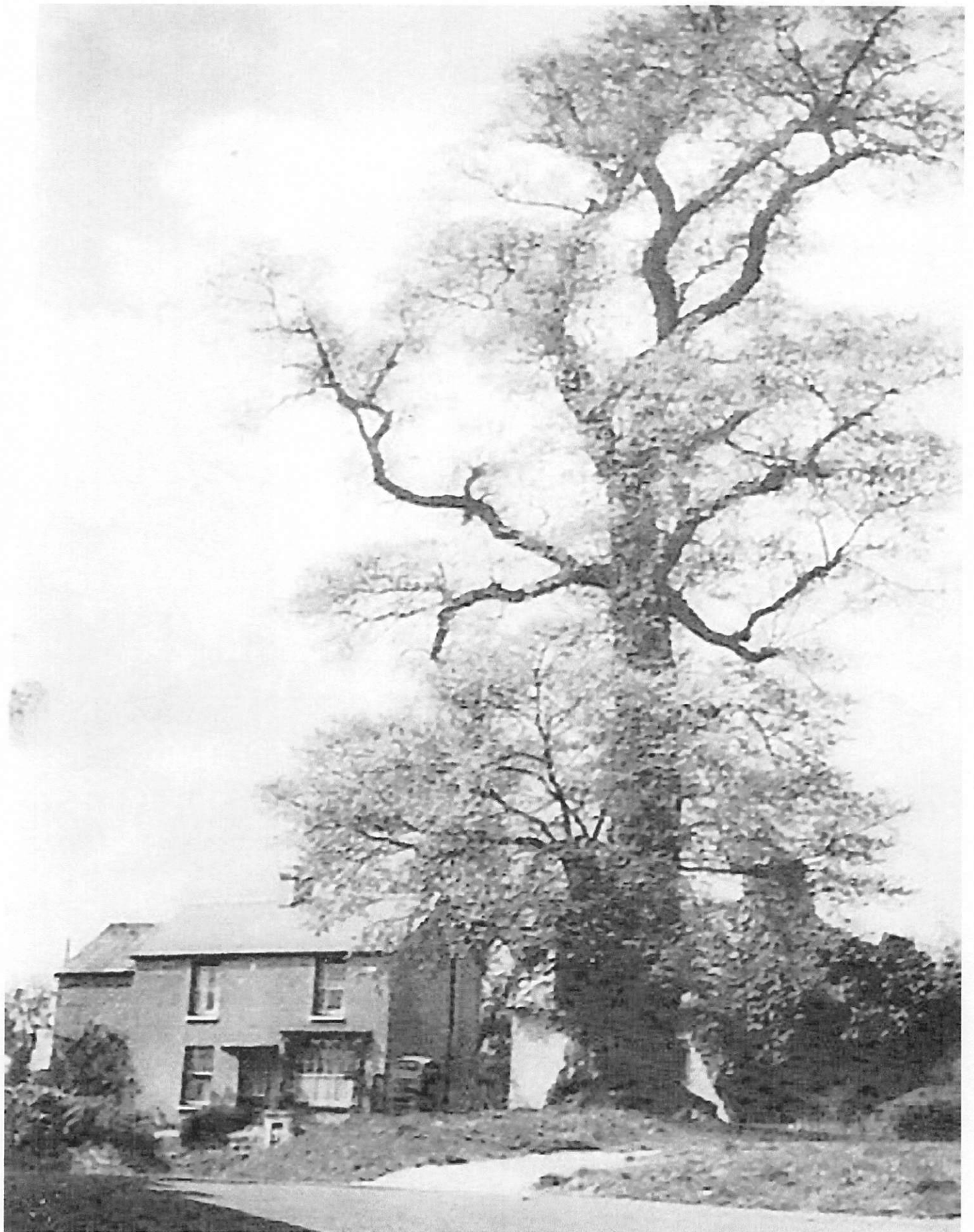




The Pound Tree 1928



AMSTEL CRUCIS 15



THE OLD POUND TREE PLANTED 1795

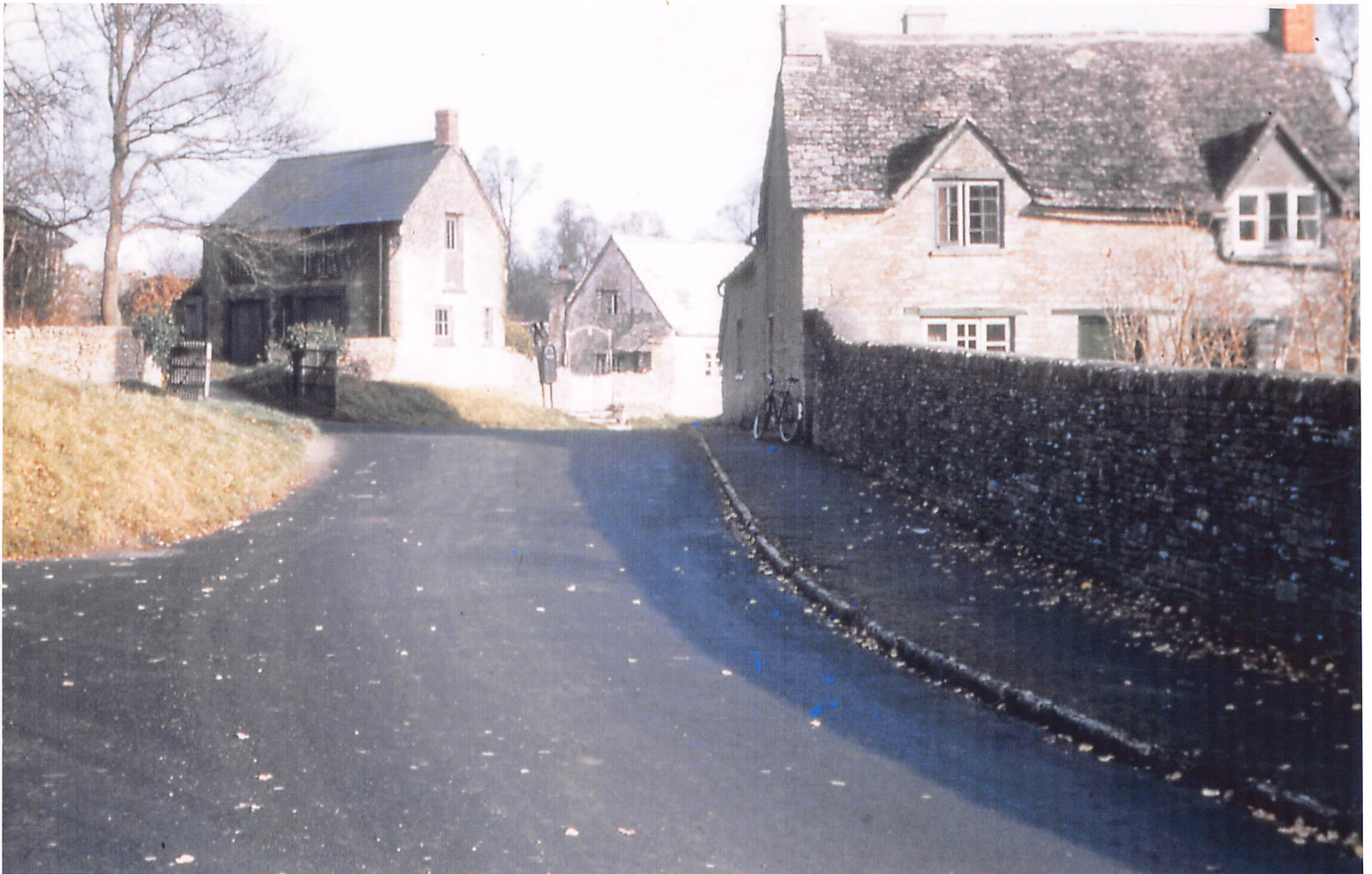
This is the house where the
ex-policeman, Mr Tom Bourton
lived. Note the absence of the
bungalow next to it.



"The Butchers Arms", Ampney
Crucis

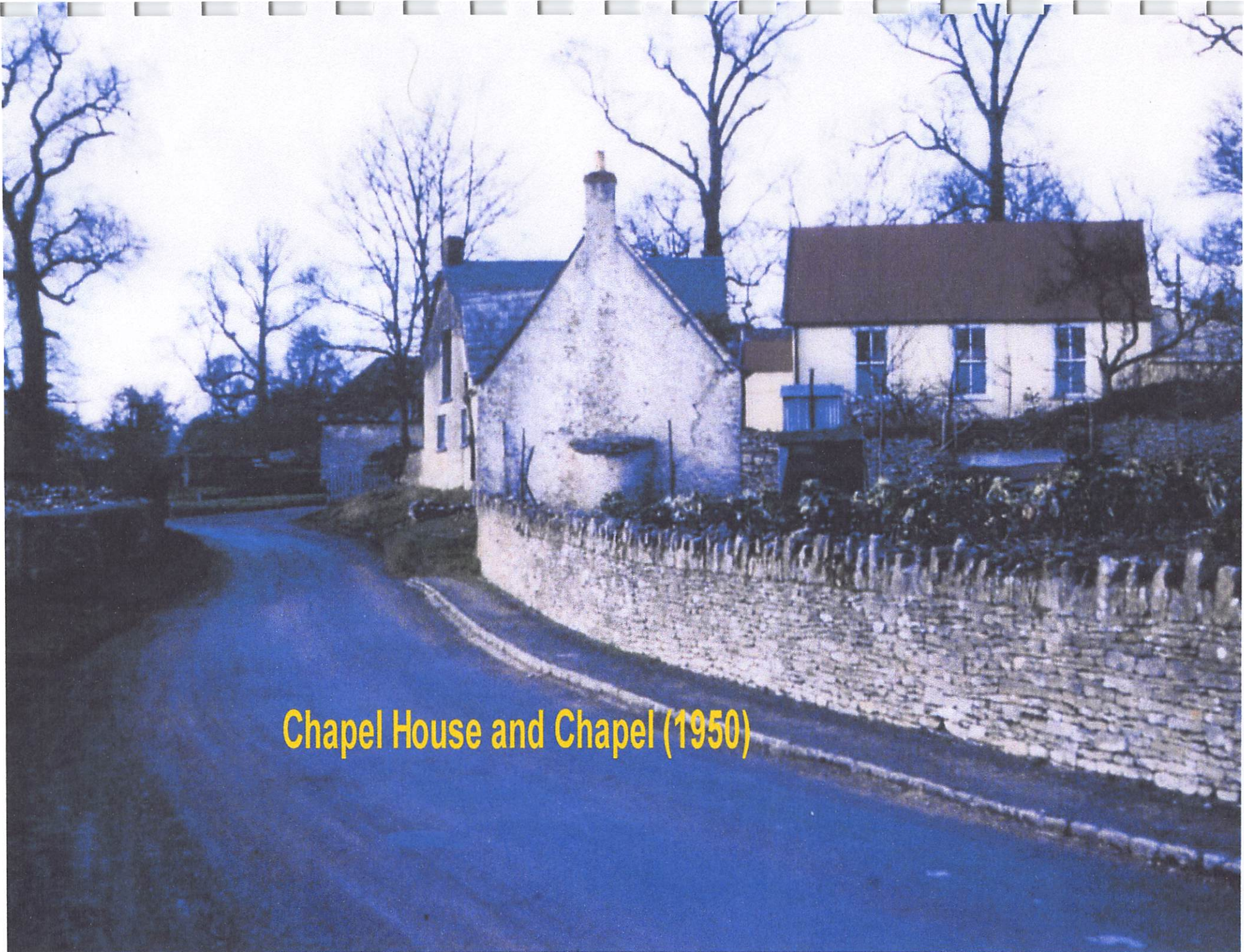


The Pound Tree 1950



Chapel House which is no longer there





Chapel House and Chapel (1950)



"The Lake" 1913
(Note the Pig Butcher)



"The Lake" 1950



The open field is where
the Pleydells is now
built





Council Workers
at Ampney houses



Hunts Hill 1916



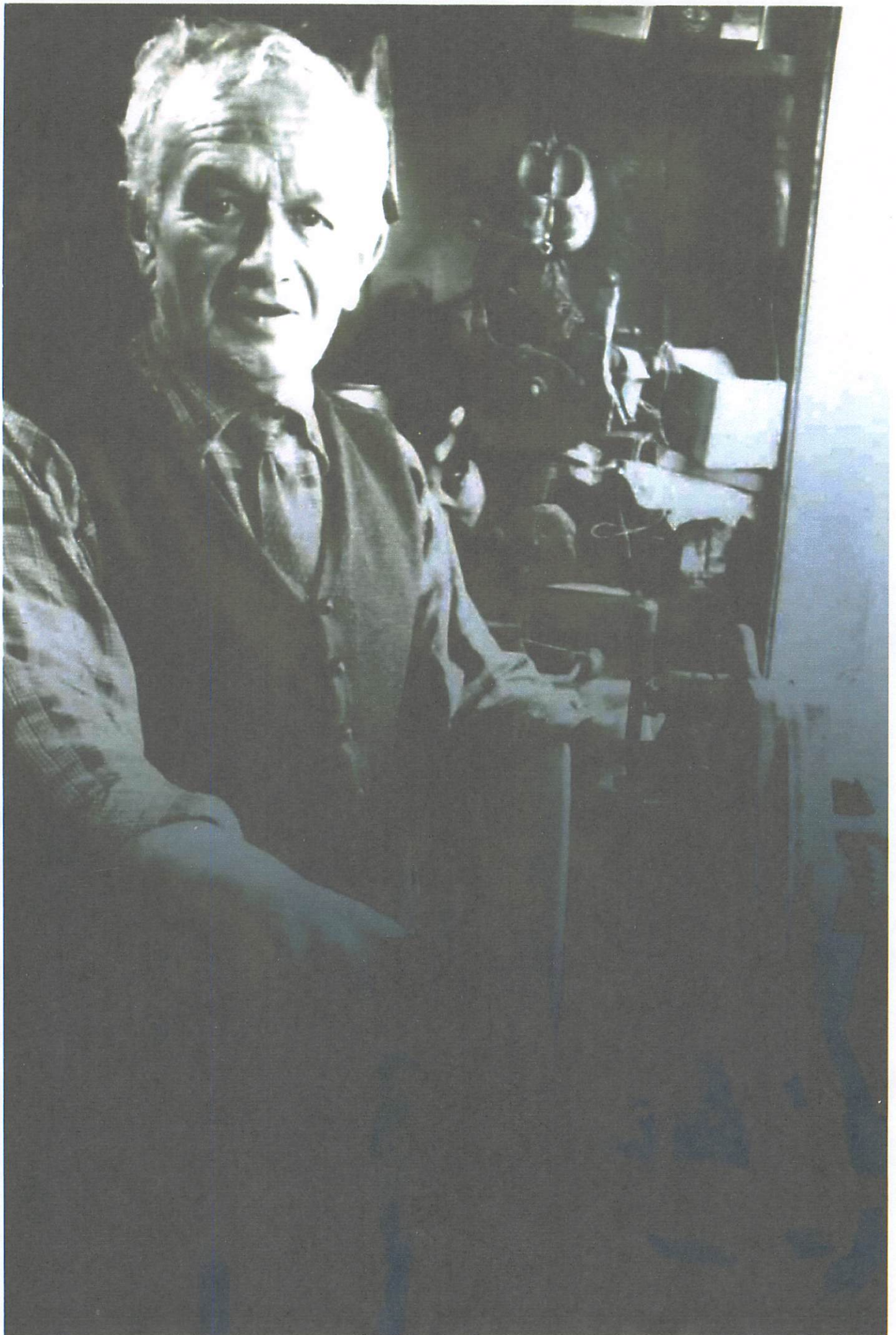
Hunts Hill 1923

This the house where "Fiddler Day"
lived



Grumpy Day Shelling Peas





Fred Bartlett - village cobbler
- lived in Cobblers Cottage

Fred Bartlett's
shed where he
mended shoes

